

















TBPN

4.22.25

12:00 PM PST

PRESENTED BY

ramp



Roy Lee
Cluely @im_roy_lee



Polymarket OpenAI release an open source model before July? 62% | DeepSeek R2 released before May? 20% | US recession in 2025? 56% | AI wins IMO gold medal in 2025?

public.com | NVDA 388.59 +1.88 (+1.73%) | META 498.61 +13.95 (+2.88%) | TSLA 238.16 +10.86 (+4.69%) | Bitcoin 91,573 +4,068.00 (+4.65%) | AAPL 200.11 +6.95 (+3.60%) | MSFT 368.12 +7.00 (+1.95%)

Made possible by:



Bezel

Numeral

AdQuick

EIGHT SLEEP

Wander


Bezel

N

Home Chat Gallery **Generate** Edit Enhance Train Assets

The interface displays two generated images side-by-side. The left image is a landscape scene with tall pine trees and a cloudy sky. The right image is a woman in a light purple dress holding a long yellow pencil. Both images have vertical toolbars on their respective sides with various icons for editing and navigation.

AI Strength

#17vali38o a woman with a long yellow dress 

Compose Text Screen Camera


3:2 QuickEnhance E Fast Model Save Upscale



Just A Happy Troll





 Create AI hugging trend on mobile

@livensaapp

98 %

pornografisch



Kun je een plaatje
maken van een
verzameling horloges
die allemaal de tijd
12:02 aangeven?



Vleierij

A space-themed background featuring a large, dark, cratered sphere (likely the Moon) on the left and the curved horizon of Earth on the right. The scene is filled with a dense field of stars and a subtle nebula-like glow.





iamSARA.io

SARA

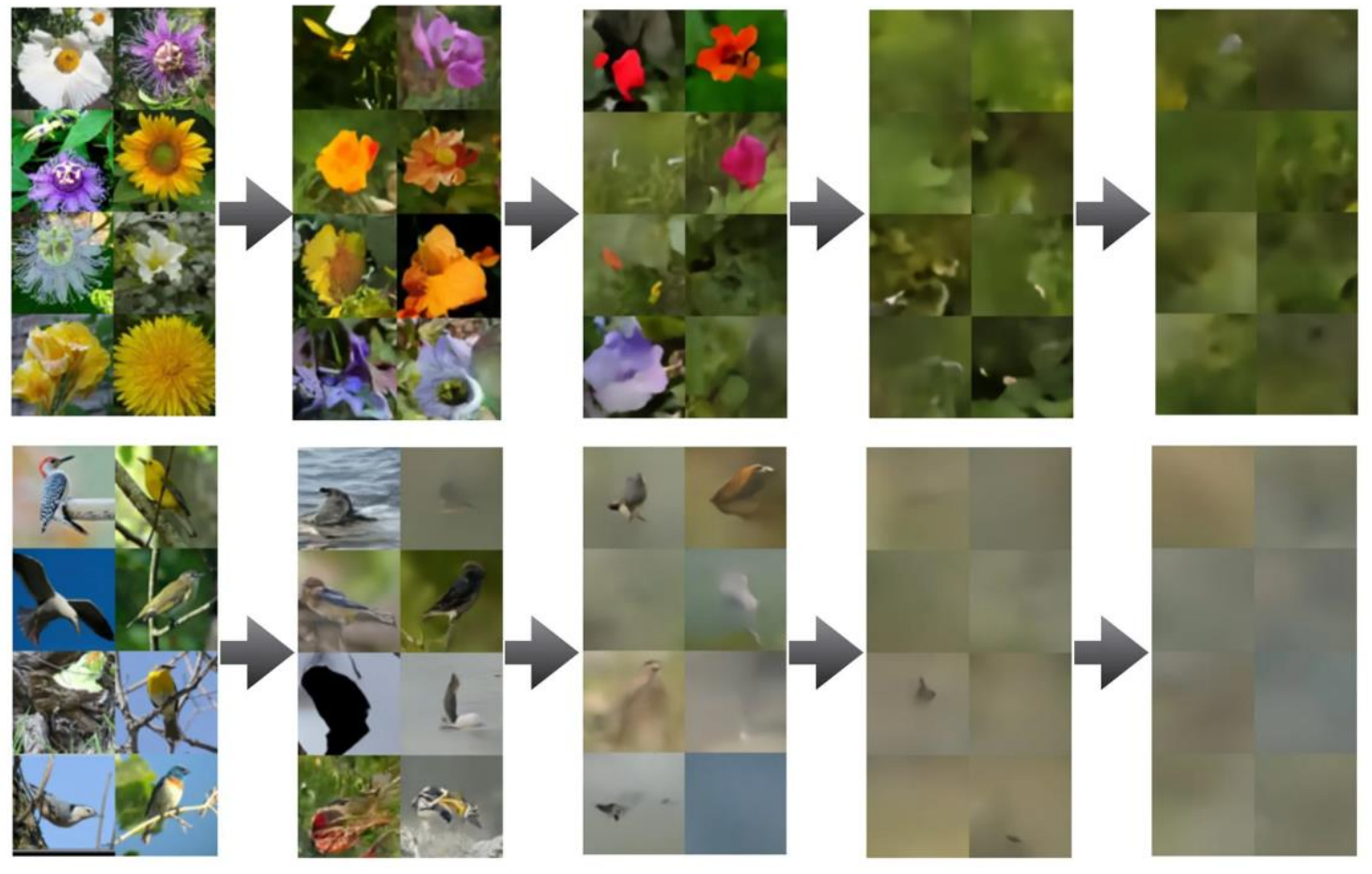




A space-themed background featuring a view of Earth from space on the right, with the Moon in the center. The scene is filled with stars and a soft glow from the sun or moon.

0.8%
FOUTMARGE
MANNEN
LICHTE HUID

34.7%
FOUTMARGE
VROUWEN
DONKERE HUID





- accessible
- activism
- activists
- advocacy
- advocate
- advocates
- affirming care
- all-inclusive
- allyship
- anti-racism
- antiracist
- assigned at birth
- assigned female at birth
- assigned male at birth
- at risk
- barrier
- barriers
- belong
- bias
- biased
- biased toward
- biases
- biases towards
- biologically female
- biologically male
- BIPOC
- Black
- breastfeed + people
- breastfeed + person
- chestfeed + people
- chestfeed + person
- clean energy
- climate crisis
- climate science
- commercial sex worker

- community diversity
- community equity
- confirmation bias
- cultural competence
- cultural differences
- cultural heritage
- cultural sensitivity
- culturally appropriate
- culturally responsive
- DEI
- DEIA
- disabilities
- disability
- discriminated
- discrimination
- diversity
- enhance the diversity
- enhancing diversity
- environmental quality
- equal opportunity
- equality
- equitable
- equitableness
- equity
- ethnicity
- excluded
- exclusion
- expression
- female
- females
- feminism
- fostering inclusivity
- GBV
- gender
- Gulf of Mexico

- hate speech
- health disparity
- health equity
- hispanic minority
- historically
- identity
- immigrants
- implicit bias
- implicit biases
- inclusion
- inclusive
- inclusive leadership
- inclusiveness
- inclusivity
- increase diversity
- increase the diversity
- indigenous community
- inequalities
- injustice
- institutional
- intersectional
- intersectionality
- key groups
- key people
- key populations
- Latinx
- LGBT
- LGBTQ
- marginalize
- marginalized
- men who have sex with men
- mental health
- minorities
- most risk
- MSM

- multicultural
- Mx
- Native American
- non-binary
- nonbinary
- oppression
- oppressive
- orientation
- people + uterus
- people-centered care
- person-centered
- person-centered care
- polarization
- polarization
- political
- pollution
- pregnant people
- pregnant person
- pregnant persons
- prejudice
- privilege
- privileges
- promote diversity
- promoting diversity
- pronoun
- pronouns
- prostitute
- race
- race and ethnicity
- racial
- racial diversity
- racial identity
- racial inequality
- racial justice
- racially

- racism
- segregation
- sense of belonging
- sex
- sexual preferences
- sexuality
- social justice
- socioeconomic
- socioeconomic
- status
- stereotype
- stereotypes
- systemic
- systemically
- they/them
- trans
- transgender
- transsexual
- trauma
- traumatic
- tribal
- unconscious bias
- underappreciated
- underprivileged
- underrepresentation
- underrepresented
- underserved
- undervalued
- victim
- victims
- vulnerable populations
- women
- women and underrepresented







iamSARA.io

SARA



